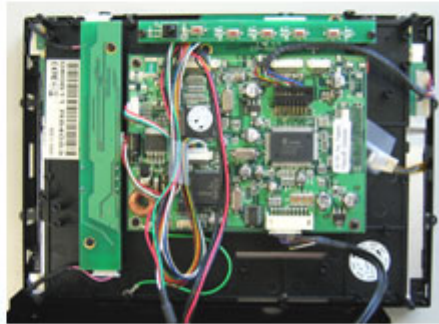




629.00 EUR
incl. 19% VAT, plus [shipping](#)

- Open-Frame !
- Transflective !
- Sunlight Boosted !
- Auto Power On !



Support: [Dimensions](#)

New ! With special sunlight readable transflective TFT and high contrast (600:1) and Anti-Glare surface!

Using transflective panels and Anti-Glare touchscreens enables readability even under direct sunlight. For the first time with midrange-models, TFT panels with transflective technology are used. An anti-reflexion-coating additionally minimizes reflections on the surface. Transflective TFTs combine the advantages of reflexiv and transmissive display systems. The incoming light, which is making the surface of other display types to be unreadable, is reflected by the rear side of the panel. Because of this passive relexion the image is winning on brilliance. During dark light conditions the readability is still ensured by a transmissive backlight.

Note : This Open-Frame TFT display is an offer primarily meant for business and project customers. End consumers should only handle with unprotected electronic parts with appropriate experience.

Possible additional options (starting from a MOQ of 20 units):

- Speakers
- Auto-Dimmer
- Different cable lengths
- Other display models/sizes

- Touchscreen RS232 instead of USB
- Other connector types
- [...] Ask us !

Additional informations :

With the touchscreen functionality you easily can control your PC. The brilliant VGA-display ensures a maximum readability and sharpness.

AC-Adapter for home usage and a car cigarette lighter adapter are included.

The CTF-800ML can be used with any PC/MAC with VGA- and USB port.

Driver-CD included, compatible with :

- Windows 95/98/ME/NT4/2000/XP/7/8/8.1/10
- XP Tablet PC Edition
- Windows CE 2.12, 3.0, .net
- Linux RedHat,Mandrake,...
- Macintosh OS 9.x, 10.x
- DOS,...

Specifications	
Screen size	8.4" digital
Aspect Ratio	4:3 wide TFT screen
Dot Resolution	2400x600= 1,440,000 dots
Physical Resolution	800x600
Supported Resolutions	640x480-1600x1024
Color configuration	RGB stripe
Brightness	450 nits
Contrast	600:1
Operating temperature	-30°C to 85°C
Power input	DC 9-30V
Power consumption	max. 10W
Video system	2x Video inputs (PAL/NTSC) 1x VGA input
Dimensions	205 x 145 x 35 mm Display : 170 x 130 mm
Video input signal	1.0Vp-p, composite video
Features	Full function OSD control (englisch) Auto Power On/Off
What is included ?	- 8.4" VGA Open-Frame Touchscreen TFT with Video-support
	- Power Adapter f. EU 230V
	- Cigarette Lighter Adapter
	- Touchscreen Driver-CD
	- Manual